



Searching: MEDLINE with Full Text Choose Databases

Suggest Subject Terms

social capital AND youth empowerment AND tobac Select a Field (optional) Search

AND Select a Field (optional) Create Alert

AND Select a Field (optional) Clear ?

+ -



Basic Search Advanced Search Search History

Refine Results

Current Search

Find all my search terms:

social capital AND youth e mpowerment AND tobacc o control AND smok...

Expanders

Search Results: 1 - 10 of 69

Relevance Page Options Share

1. Gender, the gender gap, and their interaction; analysis of relationships with children's mental health problems.



Academic Journal

(English) ; Abstract available. By: Kovess-Masfety V; Woodward MJ; Keyes K; Bitfoi A; Carta MG; Koç C; Lesinskiene S; Mihova Z; Otten R; Husky M, Social psychiatry and psychiatric epidemiology [Soc Psychiatry Psychiatr Epidemiol], ISSN: 1433-9285, 2021 Jun; Vol. 56 (6), pp. 1049-1057; Publisher: Springer International; PMID: 32914299

Subjects: Europe; Child Behavior Disorders diagnosis; Child Behavior Disorders epidemiology; Mental Health; Adult; Child; Europe;

Welcome Universitas Gadjah Mada

emerald insight

Discover Journals, Books & Case Studies

Browse our content My products Register

social capital AND youth empowerment AND tobacco control AND smoking behavior AND review

Home / Search results

Search results 1 - 10 of 21

Per page 10 20 50

(0) Citations: download RIS

Content available

Article

Publication date: 9 February 2021

Health promotion through youth empowerment to prevent and control smoking behavior: a conceptual paper

Heni Trisnowati, Djauhar Ismail and Retna Siwi Padmawati

HTML

PDF (275 KB)

Reprints & Permissions

social capital AND youth empowerment AND tobacco control AND smoking behavior AND review

269 results

Modify search Recent searches Save search/alert

Applied filters
Clear all filters

2000-01-01 - 2020-12-31



Sorted by

Relevance

Limit to

Full text

Peer reviewed

- Select 1-20
- 1  "It's almost expected": rural Australian Aboriginal women's reflections on smoking initiation and maintenance: a qualitative study
Passey, Megan E; Gale, Jennifer T; Sanson-Fisher, Robert W.
BMC Women's Health; London Vol. 11, (2011): 55.
...transmission were critical in shaping youth smoking behaviour [14]...
...women and girls and the social context within which smoking behaviour occurs...
...influenced smoking behaviour; social norms and expectations related to smoking;...
Abstract/Details Full text - PDF (289 KB) Cited by (26) References (60) Full Text
 - 2  Women and tobacco: a call for including gender in tobacco control research, policy and practice
Amos, Amanda; Greaves, Lorraine; Nichter, Mimi; Bloch, Michele.
Tobacco Control; London Vol. 21, Iss. 2, (Mar 2012): 236.
In HICs tobacco control policies have had a major impact in Full Text



ScienceDirect

Journals & Books



Register

Sign in

Brought to you by:
Universitas Gadjah Mada

Find articles with these terms

social capital AND youth empowerment AND tobacco control



Year: 2000-2020

Advanced search

132 results

Set search alert

Refine by:

Subscribed journals

Years

2020 (11)

2019 (11)

2018 (15)

2017 (6)

2016 (15)

Download selected articles Export

sorted by *relevance* | date

Research article Full text access

1 Social Capital, Women's Autonomy and Smoking Among Married Women in Low-Income Urban Neighborhoods of Beirut, Lebanon

Women's Health Issues, March–April 2010, ...

Rema A. Afifi, Rima T. Nakkash, Marwan Khawaja

Download PDF Abstract Figures Export

Research article Full text access

2 Advancing a participatory approach for youth risk behavior; Foundations, distinctions, and research directions

Journal of Business Research, August 2013, ...

Marys J. Mason, John F. Tanner, ... Zhiyong Yang

Download PDF Abstract Figures Export

FEEDBACK

Proses Analisis Paper

- Terdapat 105 artikel berbahasa Inggris, 97 artikel dikeluarkan karena mempunyai kesamaan, tidak relevan dengan topik dan tidak lengkap dan tidak ada *peer review*.
- Pada akhirnya terdapat 8 artikel yang relevan dengan topik, terdapat full text dan memiliki *peer review*.

Result :

Social Capital and Youth Smoking Behavior

- Smoking behavior is individual behavior that is more influenced by social factors (Linstrom, 2018).
- Children and adolescents who grow up in a social environment where many adults smoke are more likely to become smokers because of their parents, family, and role modeling of social behavior.
- Social capital and health-related behaviors further support norms and value interpretations relating to social participation and smoking cessation efforts (M. Lindström et al., 2003)
- Smoking behavior is a widespread phenomenon and is accepted as a common habit among most young people in Indonesia.

Social Capital and Youth Smoking Behavior

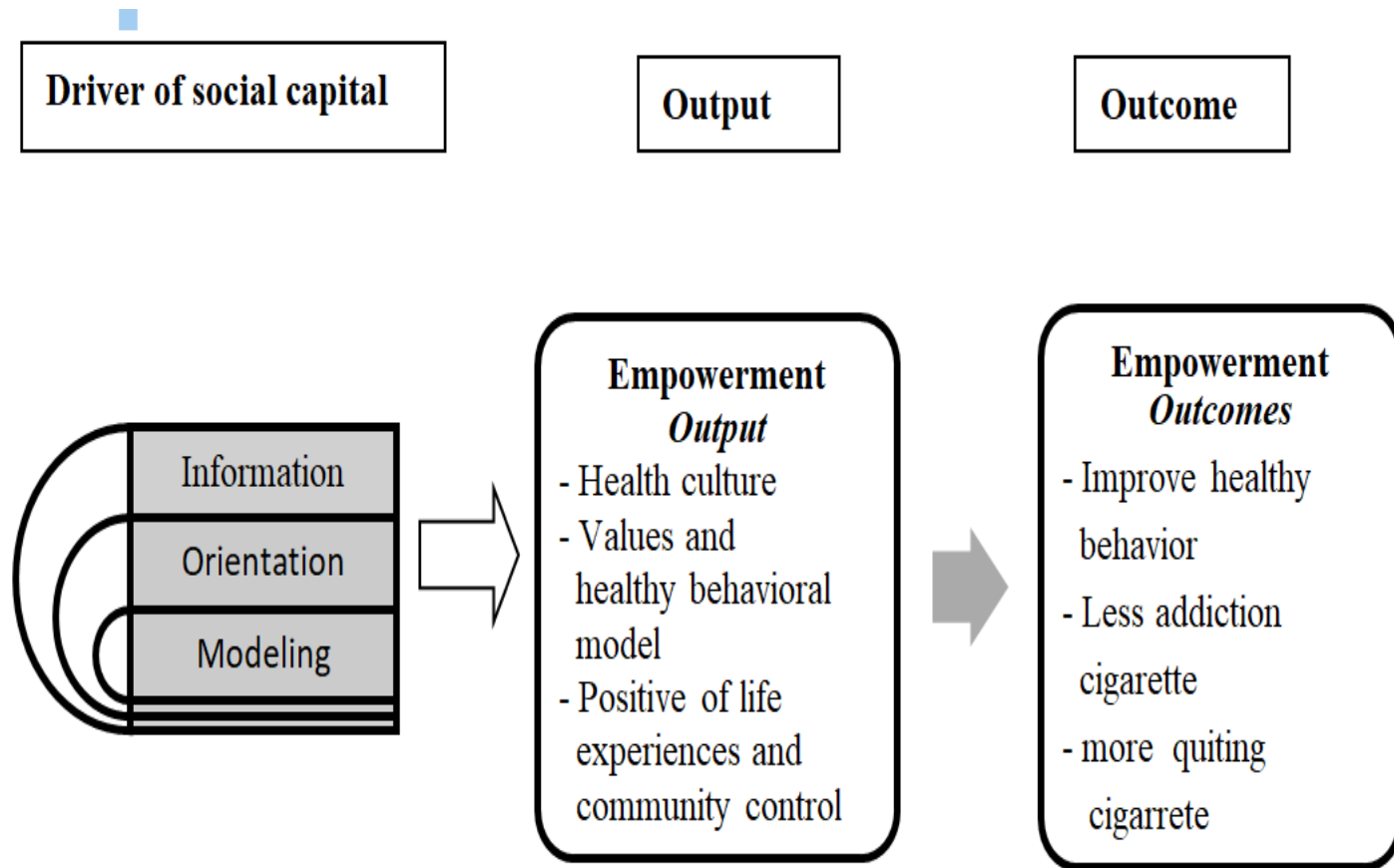


Figure 1. The impact of social capital on adolescent smoking (Albert Lorizn *et al.*, 2019)

Result :

Social Capital and Youth Smoking Behavior

Three components of social capital related to adolescent smoking behavior :

- a) Information : knowledge of adolescents related to healthy lifestyles, such as anti-smoking communication that can be obtained from local communities; the information that states smoking is very dangerous;
- b) Orientation is a broader concept of increasing motivation such as personal identity, socio-cultural situation; Orientation refers to those who have good achievements in school;
- c) Modeling is a factor that contributes to personal and interpersonal skill development; Eg. modeling school friends who smoke, exposure to cigarettes at home, while the negative attitude of neighbors becomes a protective factor for smoking in the community.

Result :

Youth Empowerment in Smoking Behavior Control

- Empowerment provides opportunities for youths to gain skills, assume responsibility, and participate in social and community environments
- Empowerment focuses on creating opportunities for consistent active group participation in positively developing youth.
- Participation is a manifestation of the empowerment process and the direct cause of empowerment outcomes
- Youth participation in empowerment is not just attendance or a lot of time spent on activities but more **emphasis on the quality of participation**

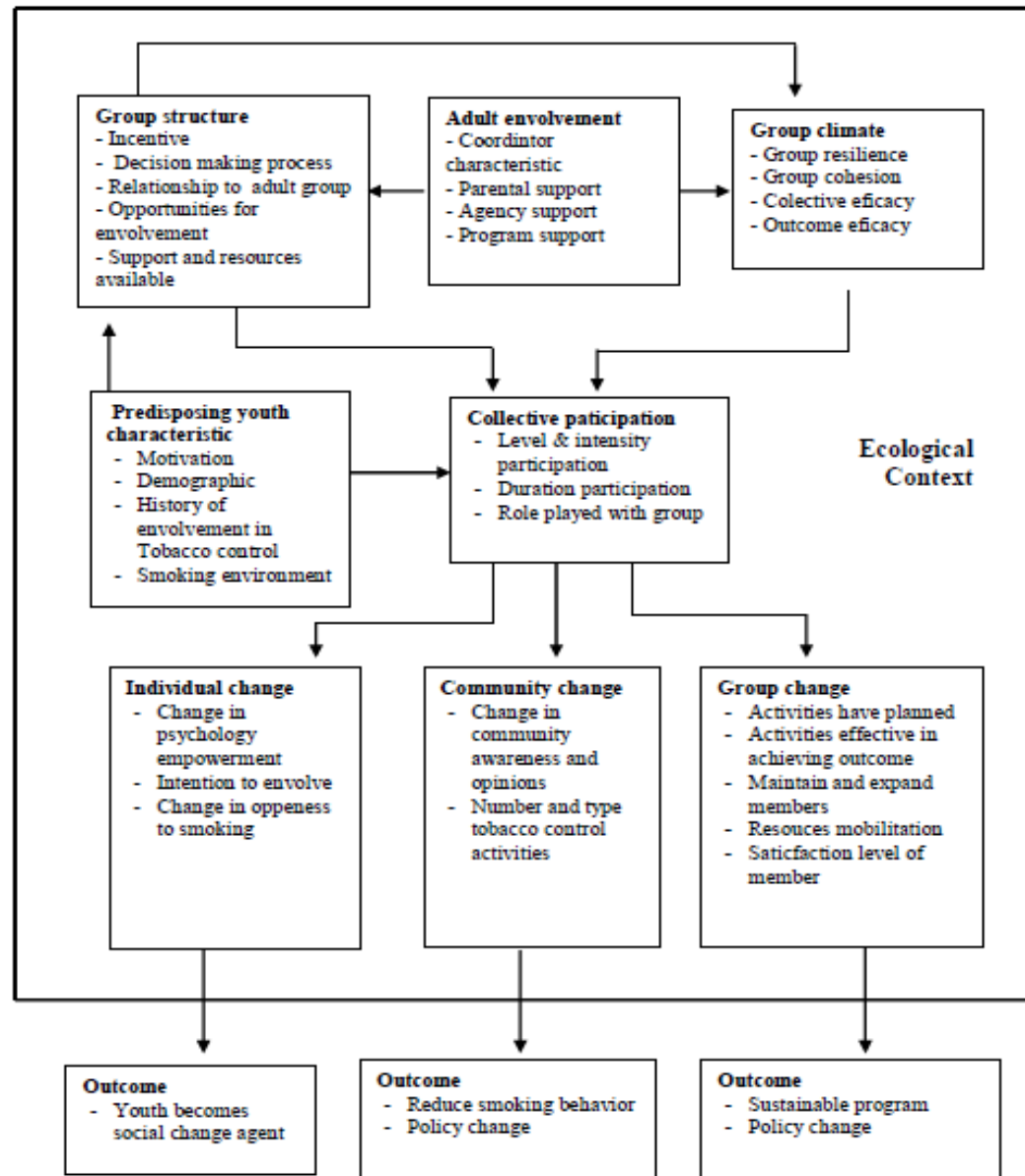


Figure 2. Youth Empowerment Theory Framework in Smoking Behavior Control (Holden, et.al, 2004)

Kesimpulan

- Social capital is an important mediator that affects youth empowerment in the context of smoking behavior control, the emphasis is on providing social responsibility to youths.
- Youth participation is the main indicator of empowerment.
- Social capital affects youths in participating collectively in smoking behavior programs.
- This collective participation will encourage the realization of empowered youth in smoking behavior programs.
- The output of youth empowerment is the intention to be involved, healthy values and behavior, positive experiences, community control, and a healthy culture of life